



Instructions for updating the mapping and the touchscreen navigation system.



The application « PEUGEOT UPDATE » allows to updating the navigation system and the mapping. This application prepares the USB stick that you will need to use in your vehicle.

1. TRANSFER THE UPDATES INTO THE VEHICLE :

The updating of the map may range several tens of minutes.

CAUTION :

For an ICE vehicle (fuel/diesel) or Plugin Hybride (PHEV) :

- It is essential to keep the engine running while the updates are being installed.
- It is recommended not to drive while the updates are being installed. Park your car in the open air rather than a confined area (i.e garage).
- However, it is possible to drive while the updates.

For an electric vehicle (BEV) :

- It is essential to have vehicle « Ready » (Indicator light « Ready » on the dashboard), to stay with door closed, to stay in the driver's seat with the seatbelt on, while the update are being installed.
- It is possible to drive while the updates.
- It is not possible to charge battery while the update are being installed.

⚠ The GPS function will not be available during the update.

⚠ Do not remove the USB stick from the car before the update process is complete.

⚠ Do not turn off your engine before the update process is complete.

CAUTION :

- Before starting the update process, set the air conditioning at your convenience, it will be functional but no adjustment will be possible during the operation (only the defogging function remains accessible via the buttons on the console).
- We also advise you not to activate the heated seats.
- Parking aids are also unavailable, so be careful when manoeuvring.

PROCESS TO TRANSFER INTO THE VEHICLE :

Insert the key into the USB port of the vehicle.
Follow the dialogue on the touch screen.

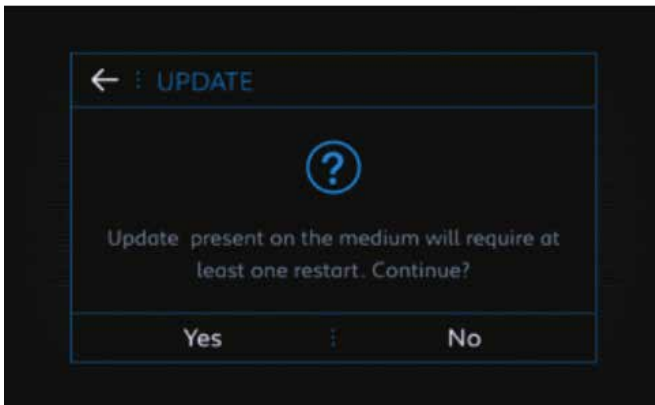
IF YOU NEED TO UPDATE :

- Only the navigation system , go to step **5.1**.
- Only the mapping, go to step **5.2**.
- Navigation system and mapping, go to step **5.1**. The update begin from navigation system to mapping.
We recommend you to make all in the same time: the complete update of your touch screen and right after the update of your mapping.

5.1 Updating the touchscreen navigation system

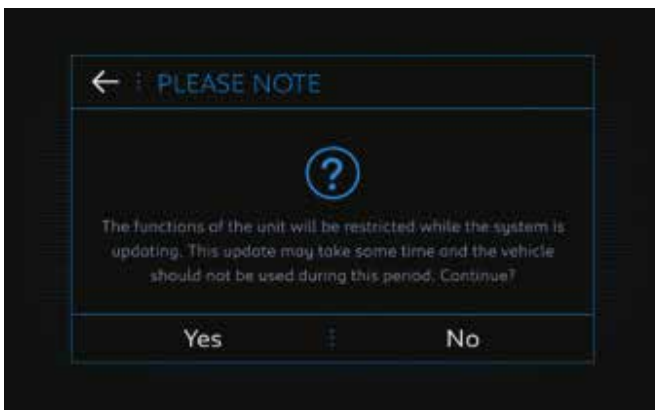
This message can appear on the screen « any content on the USB Stick ».
Ignore this message and don't remove the USB stick. This message will disappear in 10 seconds.
Then, follow the instructions on the screen

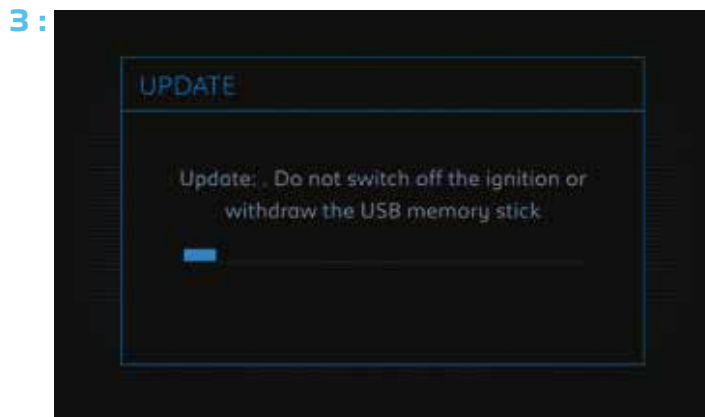
1:



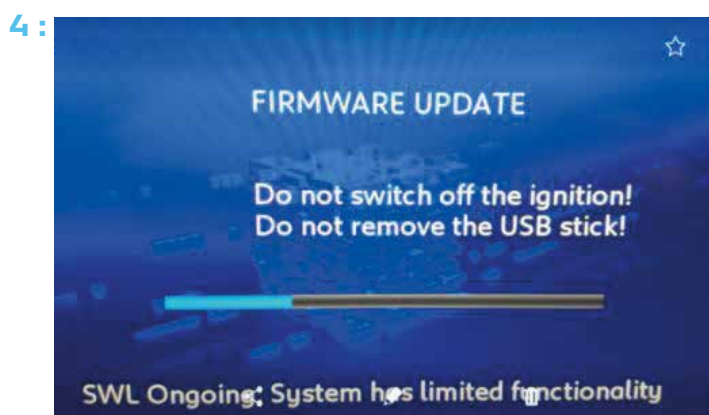
The number depends on the version of soft.

2:





A few second after the step 3, the screen will be black for a moment, before going to step 4.



Update successful.

For vehicle **concern by updating of the navigation system only**, remove the USB stick. System will restart.

Nota : If you don't remove the USB stick, you can do this without taking account the message witch propose an updating

For vehicle **concern by updating of the mapping**, the process will continue automatically. If not, don't hesitate to remove the USB stick and insert it again.

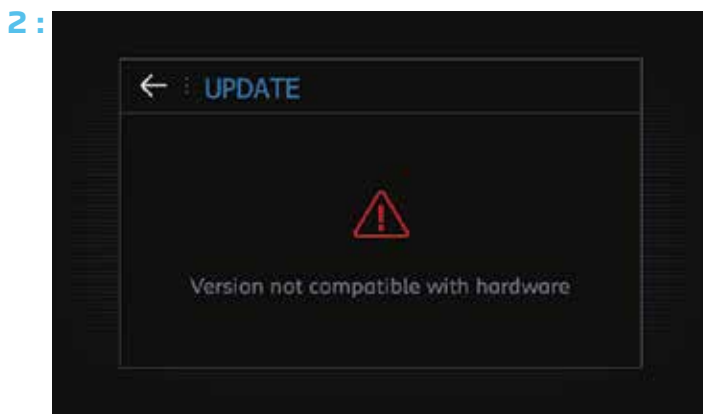
PROCEDURE IN CASE OF ERROR MESSAGE :



If the update is not fully completed, the following message appears
« FIRMWARE UPDATE FAILED DUE TO A CORRUPTED FILE ».
Remove USB stick.

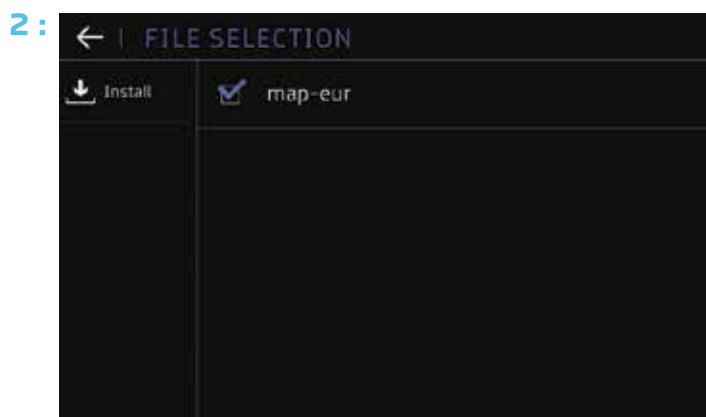
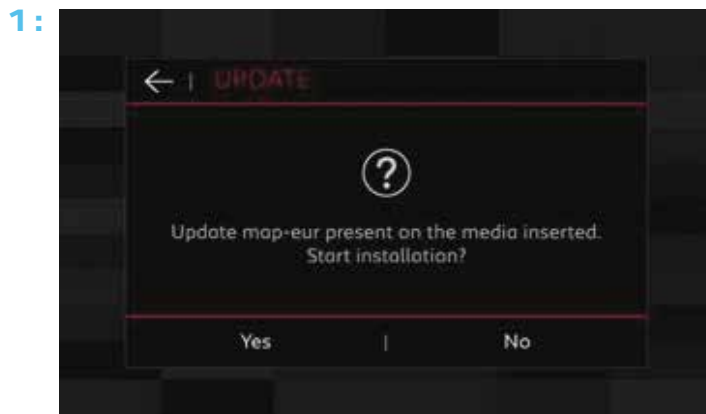


The screen restarts with the following message **« SOFTWARE LOADING ON DEMAND... »**.
Reinsert the USB stick. If the update does not initiate,
start the entire procedure again with a new USB stick.

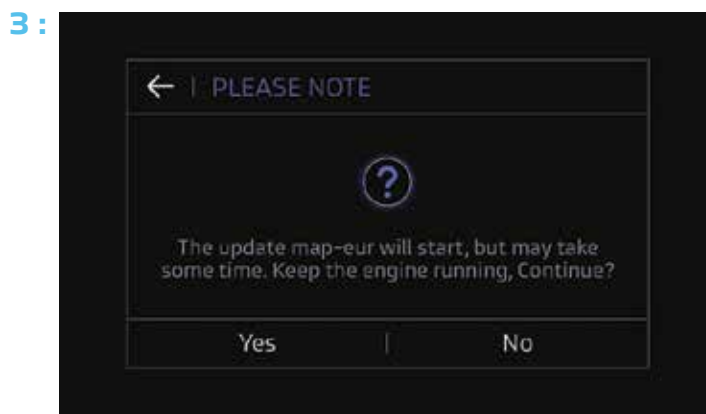


If the following message appears **« Version not compatible with the hardware »**,
the files on the stick or the formatting of the stick itself are incorrect.
Start the entire procedure again with a new USB stick.

5.2 Updating the mapping



Click on Install.



Procedure in case of error message :

According to vehicle technical configuration, it may occur that the update stops during the process indicating the error message " Update Error" and resulting in a black screen instead of the Map view in the navigation screen . If this happens, please remove the USB stick and replug it again.

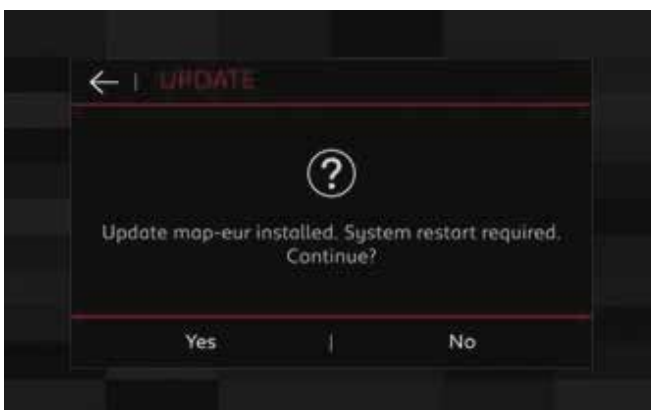
This will restart the installation and the problem should be solved.

Please note :

According to vehicle technical configuration, it will be possible or not to select countries that you need. This is allows to reduce the time to update mapping.



5:



6: You can now remove the USB stick.

Nota : If you haven't remove it, the following screen appear. You can still remove the USB stick.

